

# CREATE A GREENHOUSE



## BEES

Help to pollinate the plants in the garden.

Bees love Basil and Thyme.

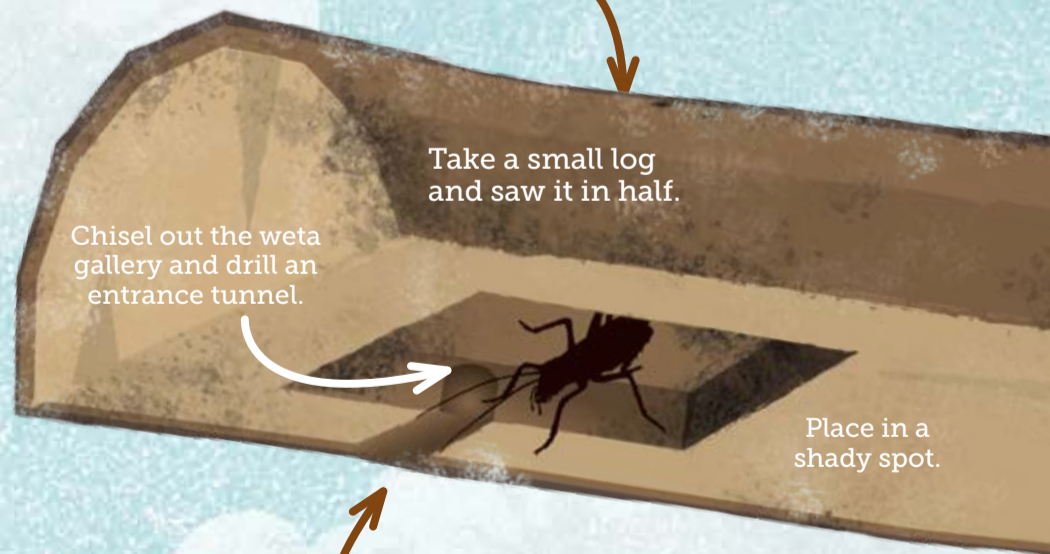
## NZ BIRDS

Fantail, Silvereye, Grey Warbler and Tui will all travel a long way if there is food for them in your garden.

# THE more BIODIVERSITY THE BETTER FOR THE GARDEN

## BUILD A WETA MOTEL

Weta motels are no-fuss homes for weta. They find one, crawl in and relax.



## STEMS

Hold up the plant so the leaves can get lots of sun.

## VERTEBRATES

Animals with backbones.

## LIZARDS

Help to scatter seeds of native plants. (All native lizard species are protected by the Wildlife Act)

